



PREMIUM
 BUSINESS LOCATION

SUMERU
 RETAIL & WORK SPACE



SUMERU
RETAIL & WORK SPACE

BE THE FIRST TO EXPERIENCE

We offers a flexible and technologically-advanced working environment that is safe, healthy, comfortable, durable, aesthetically-pleasing and accessible. It is designed to accommodate the specific space and equipment needs of the occupant, staff and visitors. Special attention has been given to the selection of finishes particularly areas with public access.

PREMIUM LARGE SPACE MORE THAN
1200 SQ. FT.

IDEAL FOR

HOSPITAL | RESTAURANTS | SHOWROOMS |
CONFERENCE HALL | BANQUETS | HOTEL |
PREMIUM OFFICE SPACE | RETAIL OUTLET |
COACHING CLASSES



A BUSINESS
REVOLUTION
IS ABOUT TO BEGIN



MASTER PLAN



- > AGGRESSIVE LOCATION
- > ICONIC ARCHITECTURE
- > OPTIONS OF CORPORATE HOUSES & OFFICE MODULES
- > GARDEN CAFETERIA



This detailed floor plan shows a 12,000 sq ft commercial building with the following features:

- Exterior:** A 7.50 MT wide road on the top and a 12.00 MT wide road on the right. The building has a ramp on the left side and a central entrance with stairs labeled "RAMP UP" and "DOWN".
- Interior Layout:** The building is divided into 12 shops, each measuring 10'0" x 39'3". The shops are labeled SHOP 01 through SHOP 12. Shops 01-06 are on the left side, and shops 07-12 are on the right side. A central corridor provides access to all shops.
- Common Areas:** A central common area includes a "STORE ROOM" (10'7" x 5'3"), a "LOBBY TOILET" (8'7" x 6'7"), and a "GENTS TOILET" (8'7" x 6'7"). A "PASSAGE 6'0" WIDE" runs through the center of the building.
- Parking:** There are two parking areas at the bottom of the plan. The left area has 5 parking spaces, and the right area has 8 parking spaces. A "RAMP UP" is located between the two parking areas.
- Other Features:** The plan includes a "6'0" Wide Passage" on the left side, a "6'0" Wide Passage" on the right side, and a "PASSAGE 6'0" WIDE" on the right side. The building is surrounded by landscaping, including trees and shrubs.

7.50 MT WIDE ROAD

12.00 MT WIDE ROAD

SHOP 101
166'6"x39'3"

SHOP 102
9'0"x39'3"

SHOP 103
10'0"x39'3"

SHOP 104
10'0"x39'3"

SHOP 105
10'0"x39'3"

SHOP 106
10'0"x39'3"

SHOP 107
10'0"x39'3"

SHOP 108
10'0"x39'3"

SHOP 109
10'0"x39'3"

SHOP 110
10'0"x39'3"

SHOP 111
10'0"x39'3"

SHOP 112
10'0"x39'3"

6'0" Wide Passage

6'0" Wide Passage

6'0" Wide Passage

STORE ROOM
10'7"x6'3"

LADIES TOILET
10'7"x7'2"

GENTS TOILET
12'7"x7'2"

STAIRCASE
28'0"x7'5"

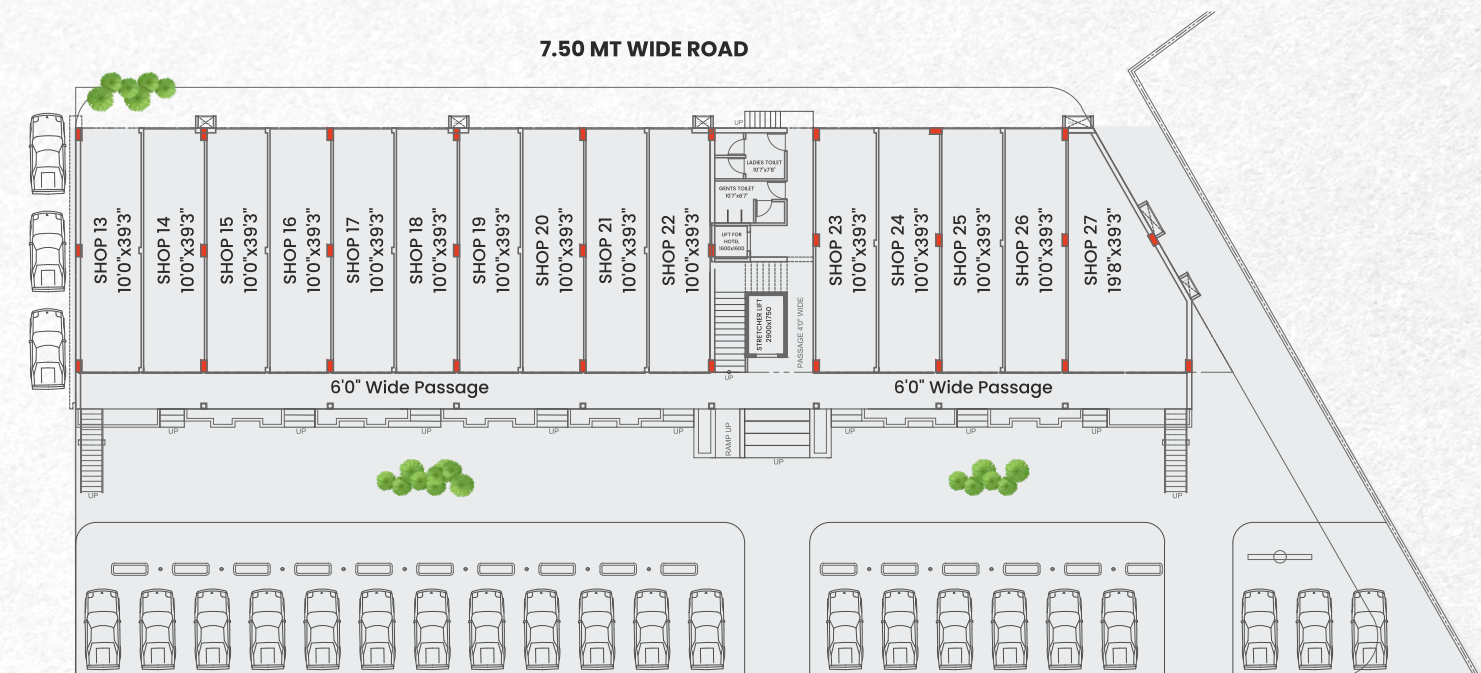
RAMP
28'0"x7'5"

PASSAGE 18" WIDE

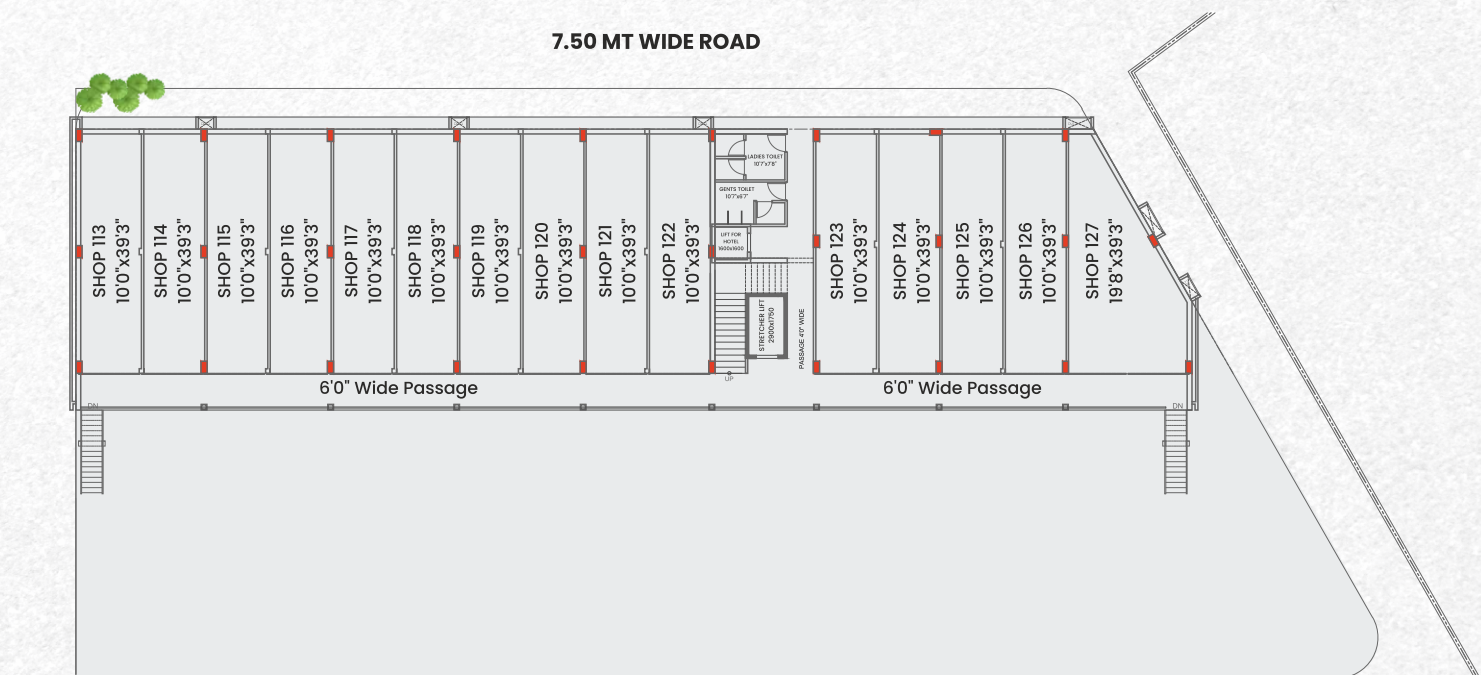
DN

UP

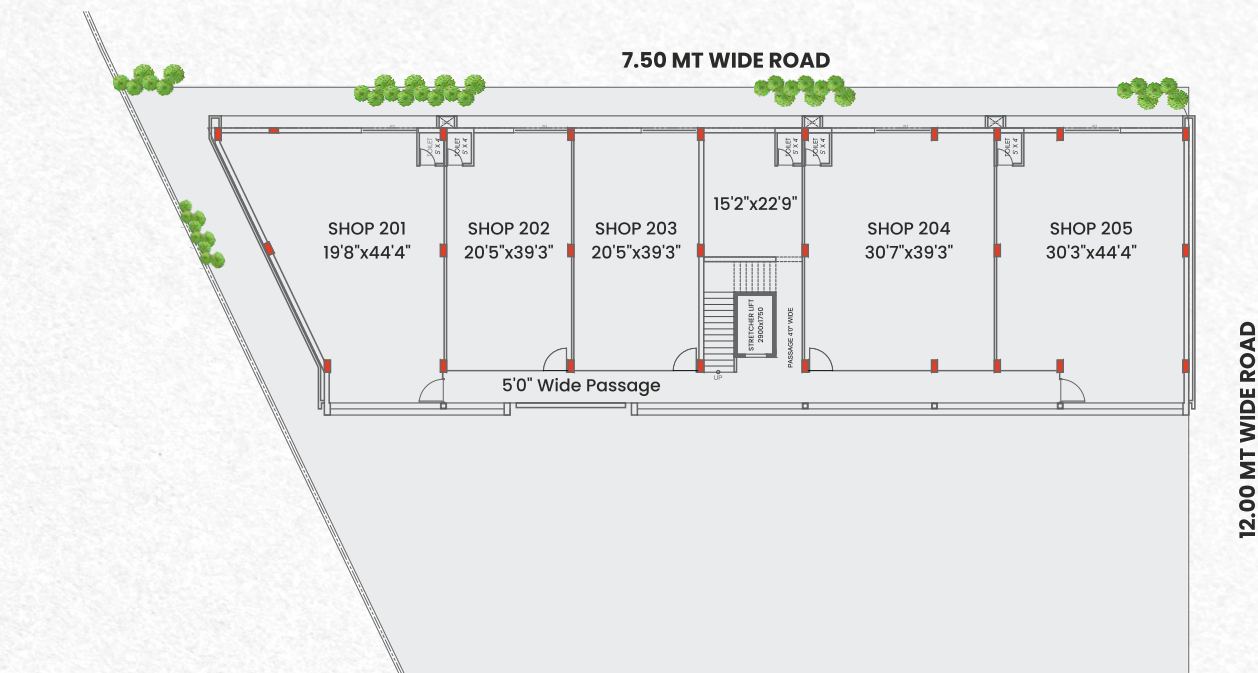
BLOCK B
GROUND FLOOR



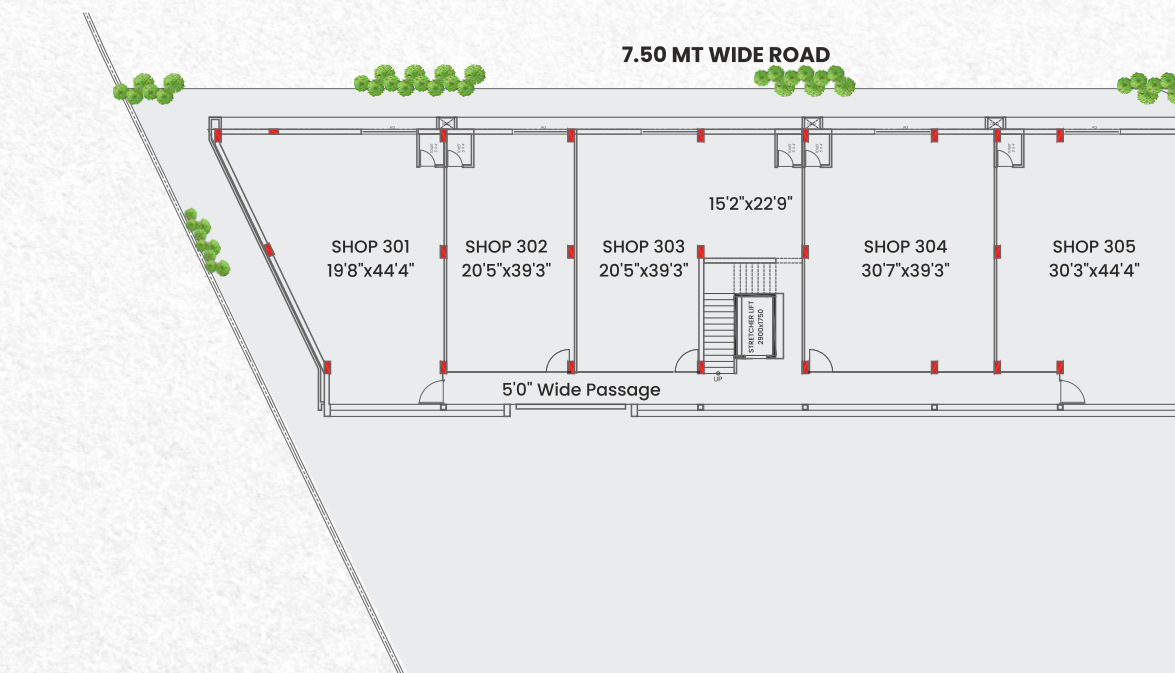
BLOCK B FIRST FLOOR



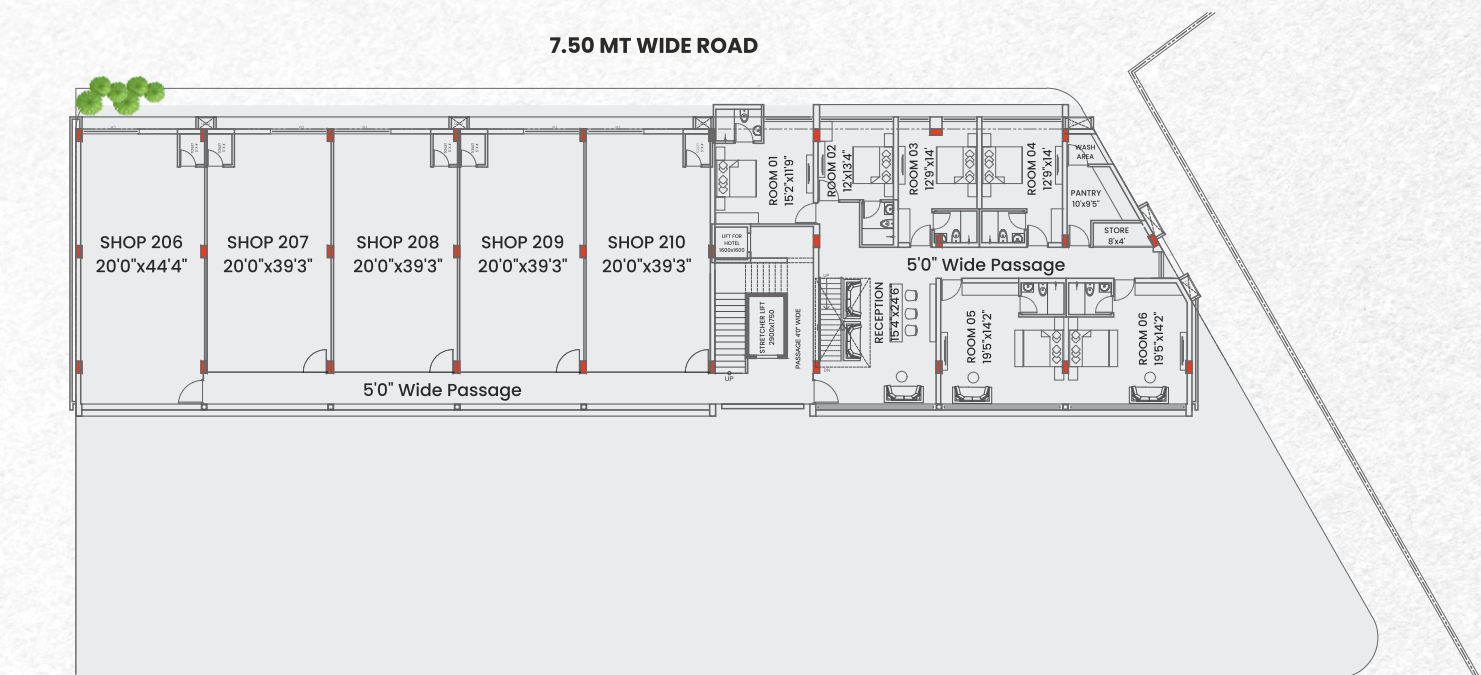
BLOCK A
SECOND FLOOR



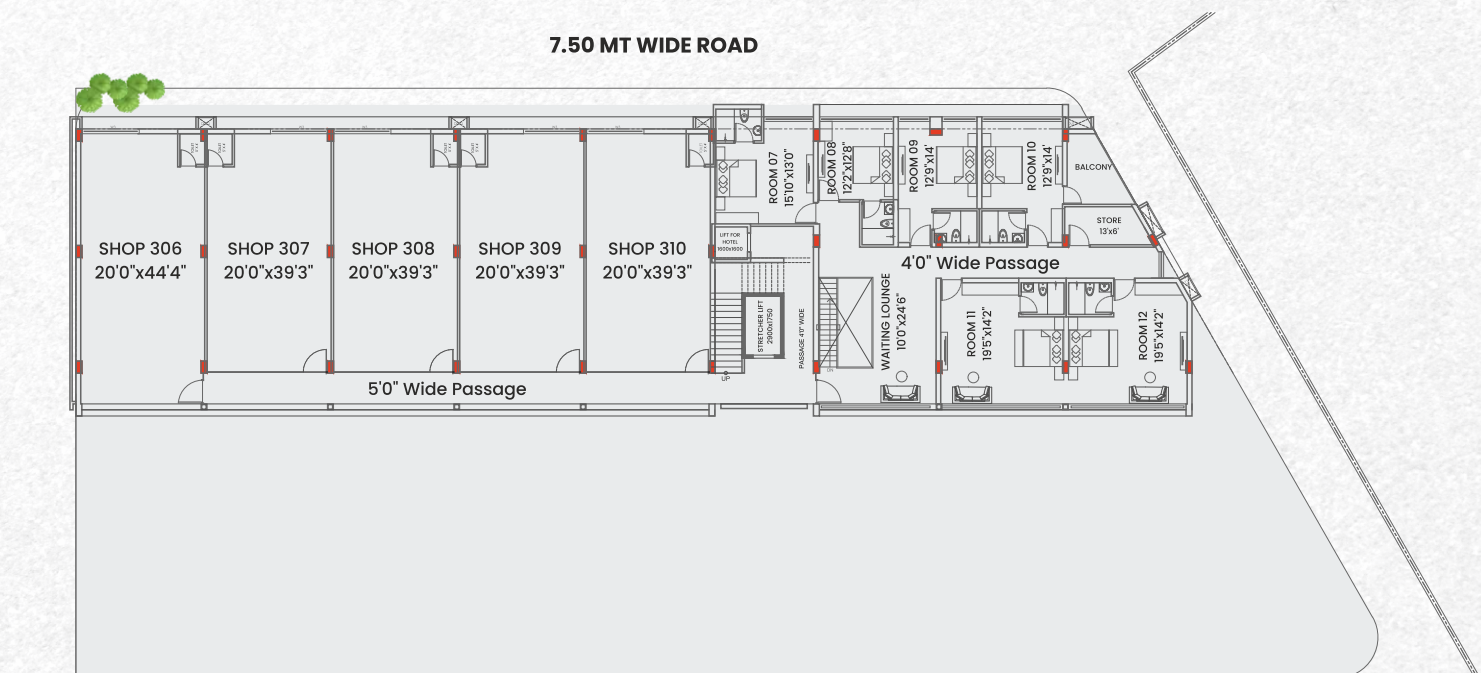
BLOCK A
THIRD FLOOR



BLOCK B SECOND FLOOR



BLOCK B THIRD FLOOR



A HAPPENING 'HOTSPOT'

that is
the **SUMERU**
Retail & Workspace



PROJECT SPECIFICATIONS

STRUCTURE

- > Earthquake resistant RCC structure designed

ELECTRIFICATION

- > Concealed electrical copper wiring
- > Modular switches

FLOORING

- > Vitrified tiles in all shops & offices
- > Vitrified flooring in entrance foyer
- > Lift lobbies with vitrified flooring for all the floors
- > Staircase with stone flooring for all the floors

COLOR

- > Internal walls finishes with wall putty
- > Acrylic emulsion paint and texture finish for exteriors

ROLLING SHUTTER

- > Good quality rolling shutter

TOILET / BATHROOM

- > Concealed plumbing
- > Flooring with vitrified tiles



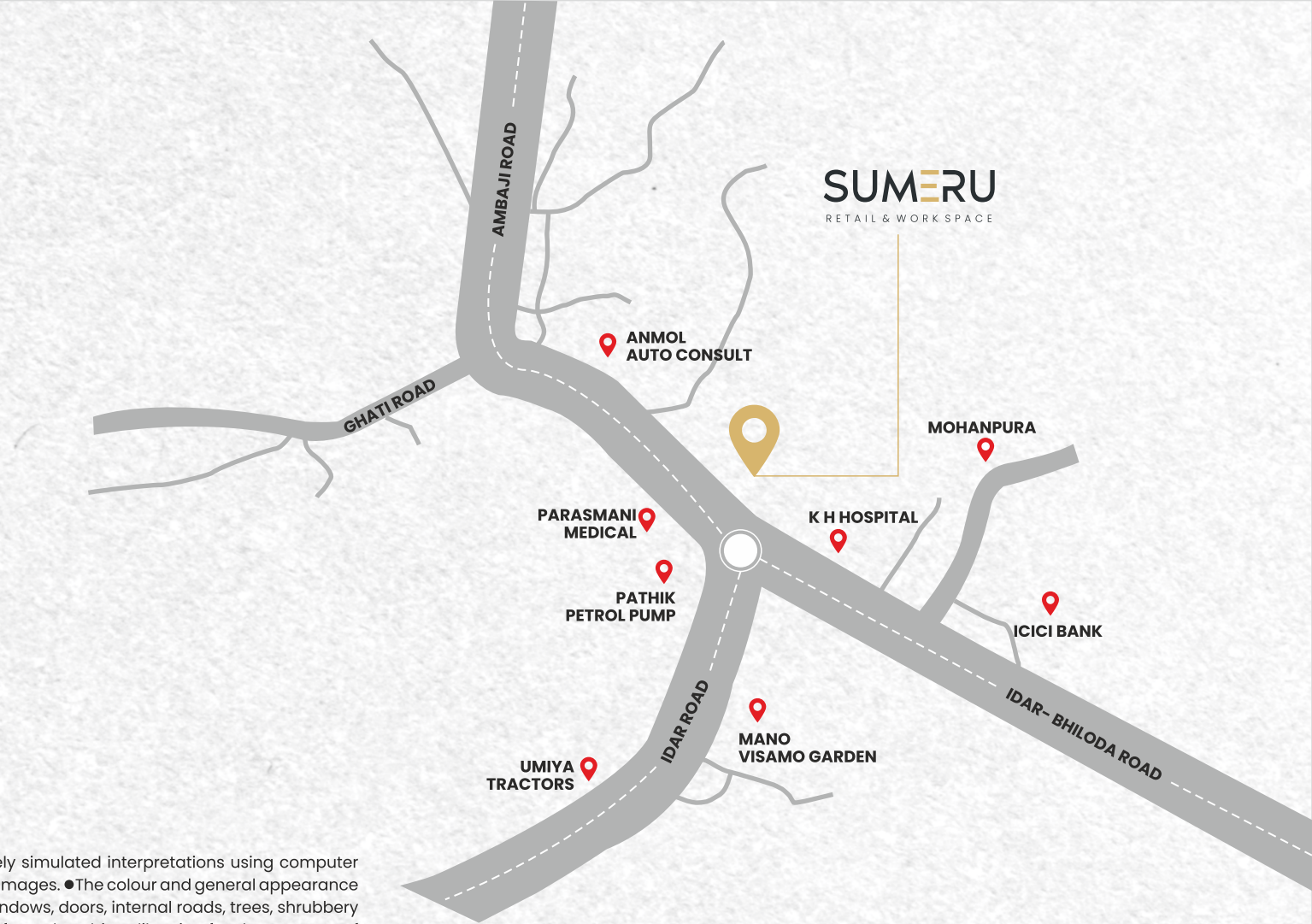
LOCATION PLAN

Developer: Architect : Structure:



Terms & Conditions

- All the architectural and interior images in the brochure, are merely simulated interpretations using computer graphics to enhance the customer understanding and are not factual images. ●The colour and general appearance of the flooring and wall tiles, sanitary ware & fittings, walls, ceilings, windows, doors, internal roads, trees, shrubbery etc. shown in the simulated computer graphics images are taken from the object libraries for the purpose of presentation and the prospective buyers of the concerned property are advised to refer to the construction specifications mentioned in the brochure. Additional amenities and/ or utilities not mentioned or shown in the brochure but may be required as per the law, should be deemed to be forming part of the project by the purchaser.
- All Furniture including wardrobes, other sofa furnishings inter-alia curtains, mattresses, bed linen, upholstery etc., lights and other electrical fixtures and appliances like air conditioners, refrigerators, TV's, telephones, laptops etc., any of the equipment, household accessories inter-alia crockery and cutlery, rugs, carpets, decorative pieces and wall hangings, wall papers, utensils etc., apparels and all other consumable and movable items shown in the simulated images do not form part of the sale of any property by the developer. ● All dimensions presented herein are approximate and the measurements are made from unfurnished surfaces. ●All rights reserved with the developers to make any changes in the project and all the members shall abide by such changes. ● GST, LOCAL AUTHORITY/MAINTENANCE charges along-with GEB electrical charges including cable and Sub-station cost shall be borne by purchaser. Stamp duty, registration charges, or any other charges and taxes as & when levied by government or any of its body shall be borne by purchaser/buyer/legal possession holder. ● GST at applicable rate is payable on the due amount and is non refundable. ● This brochure is for restricted private circulation only and is for an easy display of the project. It should not be considered as a legal document with obligations for specific performance. It is meant for the purpose of conceptual presentation only. ● Subject to Sabarkantha Jurisdiction only.



Bhiloda 3 Rasta, Idar - Ambaji highway,
Idar 383430, Sabarkantha.

Talsibhai Patel: +91 94267 08527

Chirag Gandhi: +91 76009 80002

SUMERU
RETAIL & WORK SPACE